

Matisse series

MODEL	Matisse Er:Glass	Matisse HR Er:Glass + Alexandrite	Matisse VT Er:Glass + Nd:Yag		Matisse QS Er:Glass + Q-Switched Nd:Yag	
Source	Er:Glass	Alexandrite	Nd:Yag		Q-Switched Nd:Yag	
Wavelength [nm]	1540	755	1064 long pulse	1064 short pulse	1064	532
Pulse width [ms]	4-14	2-100	2-100	0.3-1	6 ns	6 ns
Spot size [mm]	8, 10	up to 16	up to 12	up to 8	up to 5x5	up to 5x5
Fluence [J/cm ²]	up to 250 per microspot @ 10 mm	up to 25 @ 14 mm	up to 400 @ 4 mm	up to 30 @ 5 mm	22 @ 2x2 mm	11 @ 2x2 mm
Skin cooling	integrated	integrated	integrated	integrated	integrated	integrated
Repetition rate [Hz]	up to 1	up to 2	up to 2	up to 7	up to 10	up to 10
Electrical requirements	220 - 230 V AC; 16 A; 50-60 Hz					
Dimensions and weight	480 (L) x 900 (W) x 930 (H) mm ³ ; 85 Kg					

OPTION	Twain 2940	Twain IPL						Twain 1320 (i)
Source	Er:YAG	IPL handpieces						Nd:Yag
Wavelength [nm]	2940	650-1200	625-1200	590-1200	570-1200	550-950	400-1200	1320
Pulse width [ms]	0.3 - 1	5-240						5 - 10
Spot size [mm]	3,5 - 7 - 8	13x48 mm ² - 13x25 mm ²						up to 8
Fluence [J/cm ²]	14	up to 30				up to 20		up to 35 @ 6 mm
Fluence (fractional) [J/cm ²]	20							
Repetition rate [Hz]	up to 6	0,5	0,5	0,5	0,5	0,5	0,5	up to 5

(i) Option Twain 1320 nm available only for Matisse VT

MODEL	Matisse	Matisse HR	Matisse QS	Matisse VT	Twain IPL	Twain 2940	Twain 1320
Hair removal		•		•	•	•	
Vascular lesions				•	•	•	
Skin rejuvenation	•	•	•	•	•	•	
Skin tightening	•	•	•	•	•	•	•
Fractional non-ablative rejuvenation	•	•	•	•			
Fractional ablative rejuvenation						•	
Epidermal pigmented lesions		•	•		•	•	
Dermal pigmented lesions	•		•				
Tattoo removal			•				
Surgical dermatology						•	

Quanta System's products are manufactured according to the International standards and have been cleared by the most important International notified bodies. The Company is UNI EN ISO 9001:2008 and UNI EN ISO 13485:2003/4 certified. Quanta System S.p.A. was founded in 1985 and belongs to the El. En Group (a public company listed on the Star segment of the Italian Stock Exchange) since January 2004. The company, divided into three business units (scientific, industrial and medical) is specialized in laser and opto-electronic devices.

Specifications are subject to change without notice.

Matisse

The Ultimate Fractional Skin Resurfacing Platform

The Solution for Skin Rejuvenation

NON ABLATIVE FRACTIONAL SKIN RESURFACING
SKIN REJUVENATION
WRINKLES
KELOIDS AND SCARS
MELASMA
STRETCH MARKS

HAIR REMOVAL
VASCULAR LEASIONS
TATTOO REMOVAL
PIGMENTED LEASIONS
(COMBINED VERSIONS)

ABLATIVE FRACTIONAL
SKIN RESURFACING
(TWIN 2940)





Matisse represents the state-of-the-art in fractional laser systems for skin resurfacing and rejuvenation. Removal of wrinkles, scars, rosacea and pigmented lesions such as melasma, lentigines and dyschromia by mean of Matisse becomes extremely effective and safe.

Practitioners achieve great and reproducible aesthetical results. Matisse technology introduces a new era for laser treatments, by mean of its extremely precise multilayer fractional photothermal interaction with the skin.

FEATURES

- Er:Glass laser @1540 nm
- Fractional tips specific for skin tightening and wrinkle treatments
- Integrated Skin Cooler
- Can be combined with other lasers
- Ready for TWAIN options

HOW DOES MATISSE WORK?

Matisse is a 1540 nm **Er:Glass laser**. This wavelength easily penetrates into the skin down to 1,5 mm and thanks to the balanced absorption by water, it stimulates the skin layers at different temperature grades. By mean of the special lens array, Matisse produces thousands of micro-columns with a high level of thermal heating and coagulation and an evenly low level thermal stimulation. Matisse treatment combines Fractional Skin Resurfacing with Non-ablative Dermal Remodelling.

The combination of these two actions produces new dermal tissues in the fractional areas and achieves excellent results without downtime and related risks for the patients. No anesthesia or gel are requested thanks to the use of an **integrated skin cooler**. This ensures fast treatments and painless sensations to the patients. Matisse is designed to achieve greater safety and reduced side effects. Matisse technology provides proven and superior clinical results compared to other fractional or non-ablative skin rejuvenation systems.

ADVANTAGES

- **Integrated skin cooler** for easy and painless treatments
- **No patient preparation before treatment**, no anesthesia, dyes or gels
- **Tips for different skin treatments**, fractional lenses with density of 1000 or 40 microspots cm²
- **100 or 250 µm microspots** for fast re-epitelization
- **Can be upgraded** with TWAIN 2940 Er:Yag and TWAIN IPL handpieces.

MATISSE SERIES & APPLICATIONS

Matisse

Er:Glass 1540 nm

Non ablative fractional skin resurfacing system

- Skin rejuvenation
- Wrinkles
- Keloids and Scars
- Acne Scars
- Melasma
- Stretch Marks

Matisse VT

Er:Glass 1540 nm, Nd:Yag 1064 nm laser

Applications:

- Non ablative fractional skin resurfacing
- Hair Removal
- Vascular lesions
- Skin Tightening

Matisse HR

Er:Glass 1540 nm, Alexandrite 755 nm laser

Applications:

- Non ablative fractional skin resurfacing
- Hair removal
- Epidermal pigmented lesions removal

Matisse QS

Er:Glass 1540 nm, Q-Switched Nd:Yag 1064 and 532 nm laser

Applications:

- Non ablative fractional skin resurfacing
- Epidermal and dermal pigmented lesions
- Multicoloured tattoo removal

The availability of different Matisse versions is of great advantage in terms of space and cost optimization.

OPTIONS

Twain IPL

Matisse can be equipped, at any time, with an optional IPL, enhancing flexibility and versatility.

It allows the following treatments:

- Hair removal
- Pigmented lesions
- Skin Rejuvenation
- Vascular treatments
- Active acne

Twain 1320

Optional for any Nd:Yag of this series is the 1320 nm wavelength.

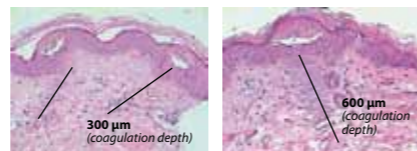
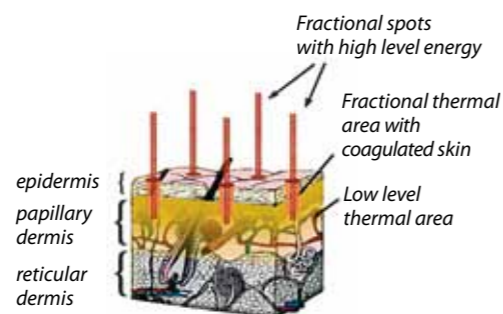
Thanks to its higher absorption by water and great penetration into the dermis, it is very effective for non ablative collagen remodeling.

Twain 2940

Optional for each series is a Erbium Yag laser all built into an handpiece. Through this module both fractional and traditional ablative skin resurfacing procedures are possible. This TWAIN represents the ideal solution for fast skin texture and wrinkle improvement.

Applications:

- Ablative Fractional Resurfacing
- Skin peels
- Removal of benign skin lesions



Biopsy, 24h after. Treatment at medium settings. The coagulation depth reaches 300µm.

Biopsy, 24h after. Treatment at high settings. The coagulation depth reaches >600µm.

TWAIN universal connector

Matisse Series has a special connector for TWAIN optional handpieces upgrading.



Twain IPL handpiece



Twain 2940 handpiece



Matisse handpiece with integrated skin cooler



Acne scars



Before



After

Melasma



Before



After

Skin rejuvenation



Before



After